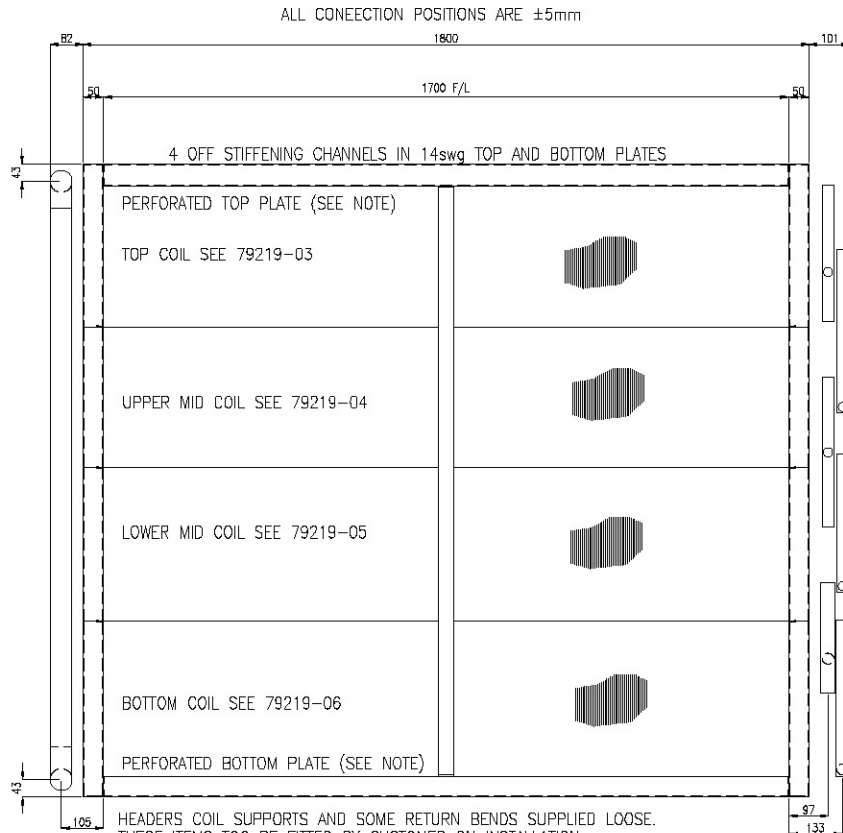
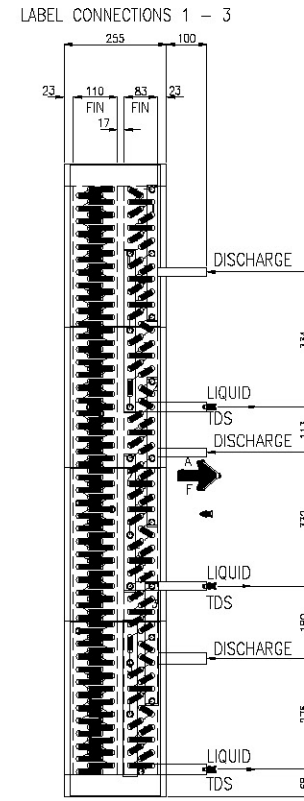


C.WATER TEST PRESSURE 17BAR(G)
C.WATER WORK PRESSURE 6BAR(G)



HEADERS COIL SUPPORTS AND SOME RETURN BENDS SUPPLIED LOOSE. THESE ITEMS TOO BE FITTED BY CUSTOMER ON INSTALLATION. THIS JOB IS SPLIT INTO FOUR SEPERATE COILS AND WILL BE SUPPLIED UNTESTED. EACH COIL WIL HAVE AT LEAST ONE REMOVABLE GALVANISED STEEL TRANSIT CHANNEL FITTED. GALVANISED STEEL TRANSIT CHANNELS TO BE REMOVED BY CUSTOMER ON INSTALLATION. FIT M6 NUTSERTS IN 14swg ALUMINIUM TOP & BOTTOM PLATES FOR COIL SUPPORT FIXINGS. SINGLE LINE OF PERFORATIONS BETWEEN FIN BLOCKS IN TOP AND BOTTOM PLATES. SEE SHEET 4 FOR FLANGE DRILLING DETAIL.



CONDENSER HEADR END AND C.WATER BENDS END
CONDENSER TEST PRESSURE 36BAR(G)
CONDENSER WORK PRESSURE 25BAR(G)

| |
|---|
| COIL CODE:HCC: 20mm TAILS CONDENSER: 46-3-12-1700(9) |
| 1/2" O.D. TUBE 0.36mm RIFLED COPPER |
| C.WATER: 46-4-12-1700(18) |
| 1/2" O.D. TUBE 0.35mm COPPER |
| FIN MATERIAL: ALUMINIUM |
| CASING MATERIAL: ALUMINIUM |
| FINISH: UNPAINTED |
| CONDENSER CONNECTIONS: SECTIONS 1 & 2: 7/8" DISCHARGE X 2 7/8" LIQUID X 2 28mm TBL Y 4mm CAPS SECTION 3: 1,1/8" DISCHARGE X 2 1,1/8" LIQUID X 2 35mm TBL X 4mm CAPS |
| C.WATER CONNECTIONS: 54mm PLAIN FLOW & RETURN 54mm TABLE X DOME CAPS |
| HANDING: L/RHS LIDAF |
| WEIGHT: 320KG |
| CUSTOMER: |

NOTES 1: HARDBOARD FIN PROTECTION & SHRINKWRAP
NOTES 2:

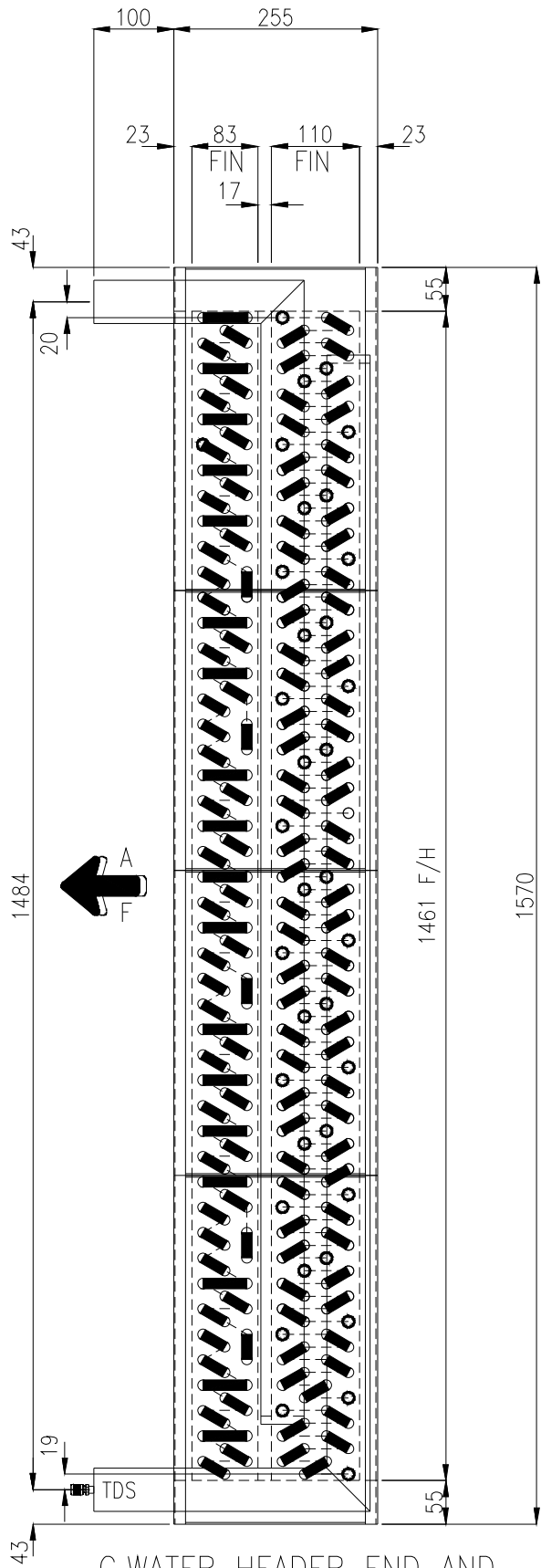
CIRCUIT DIA SEE
REVISION C: CIRCUITRY ALTERED 12.6.15
REVISION B: NO OFF CIRCUITS ALTERED 10.6.15

TITLE: REPLACEMENT C.WATER & CONDENSER
IN FOUR SECTIONS ASSEMBLED ON SITE

DEL DATE:
25-06-2015 PRE 10AM
No OFF: ONE
LABELS:



| | | | | | |
|---------------------|------|-------|--------|-------|----------|
| ORDER NO:2078/E3204 | | | | | |
| CHKD | SHT | DRAWN | DATE: | ISSUE | JOB NO: |
| MPB | 10F5 | J.Y. | 8.6.15 | C | 79219-01 |



C.WATER HEADER END AND
CONDENSER BENDS END

CONNECTIONS:- 54mm PLAIN FLOW & RETURN

HEADERS:- ϕ 54mm TABLE X

HEADERS:- DOME CAPS

NOTES:-

CHECKED

ISSUE

SHEET No.

DATE

DRAWN

JOB No.

MPB

C

20F5

9.6.15

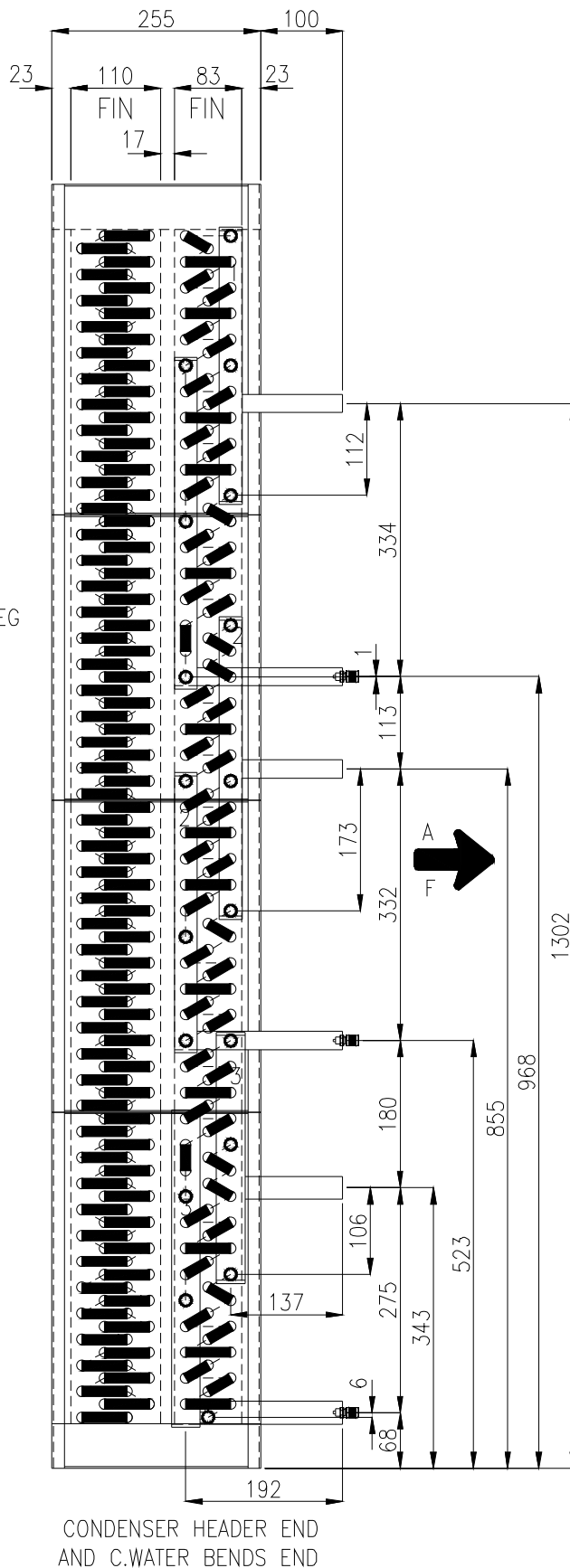
J.Y.

79219-01

TITLE:- REPLACEMENT C.WATER & CONDENSER COIL IN 4 SEPERATE PIECES

LABEL CONNECTIONS 1 - 3

DOGLEG THE TOP LEG OF EACH HEADER



CONNECTIONS 1 & 2: 22mm DISCHARGE & LIQUID X 2 CONNECTIONS 3: 28mm DISCHARGE & LIQUID X 1

HEADERS 1 & 2: 28mm TABLE Y WITH 4mm CAPS

HEADERS 3: 35mm TABLE Y WITH 4mm CAPS

NOTES:-

CHECKED

ISSUE

SHEET No.

DATE

DRAWN

JOB No.

MPB

C

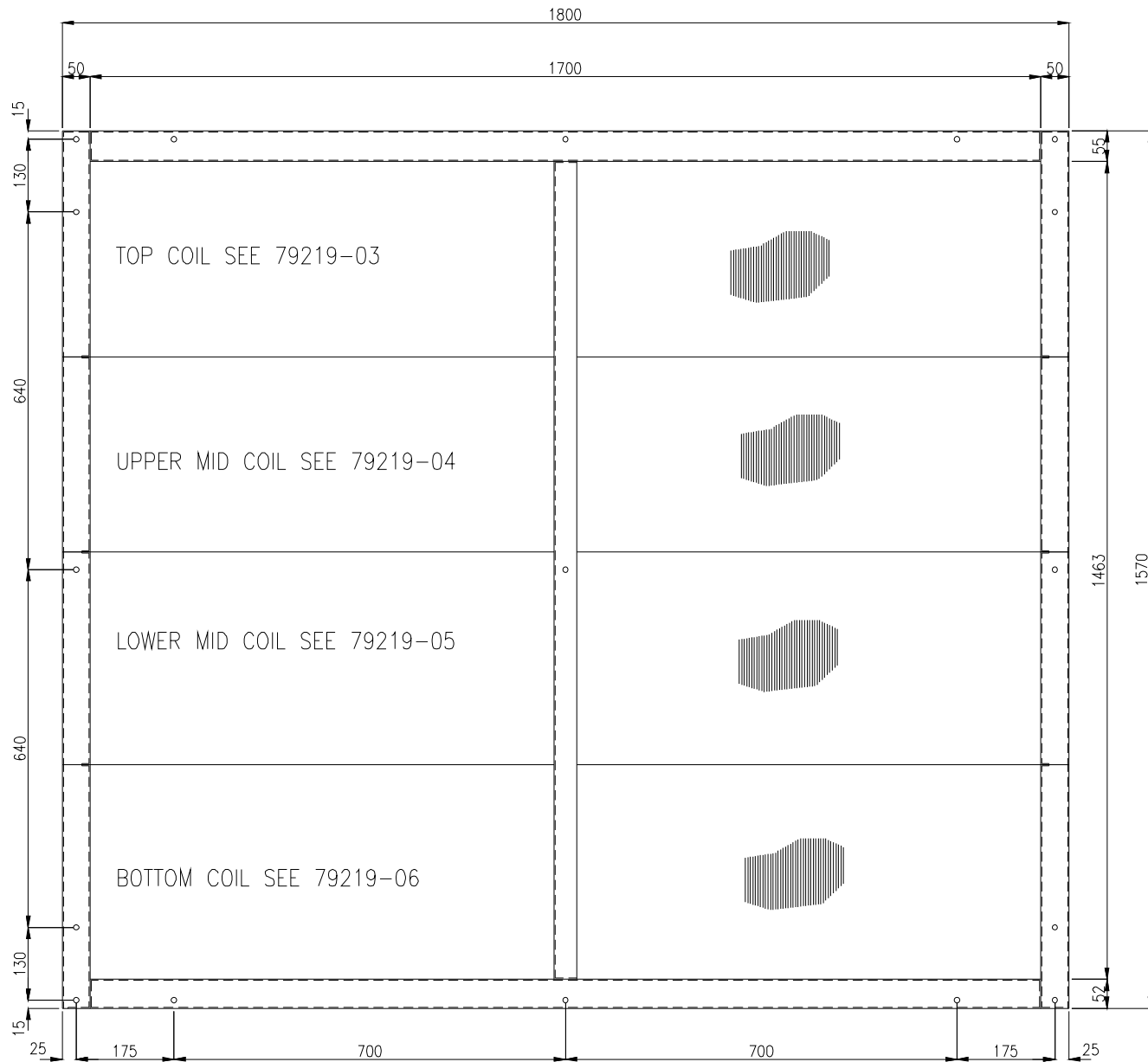
3 OF 5

9.6.15

J.Y.

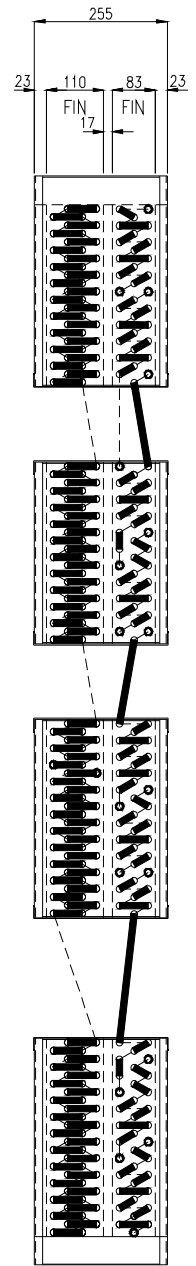
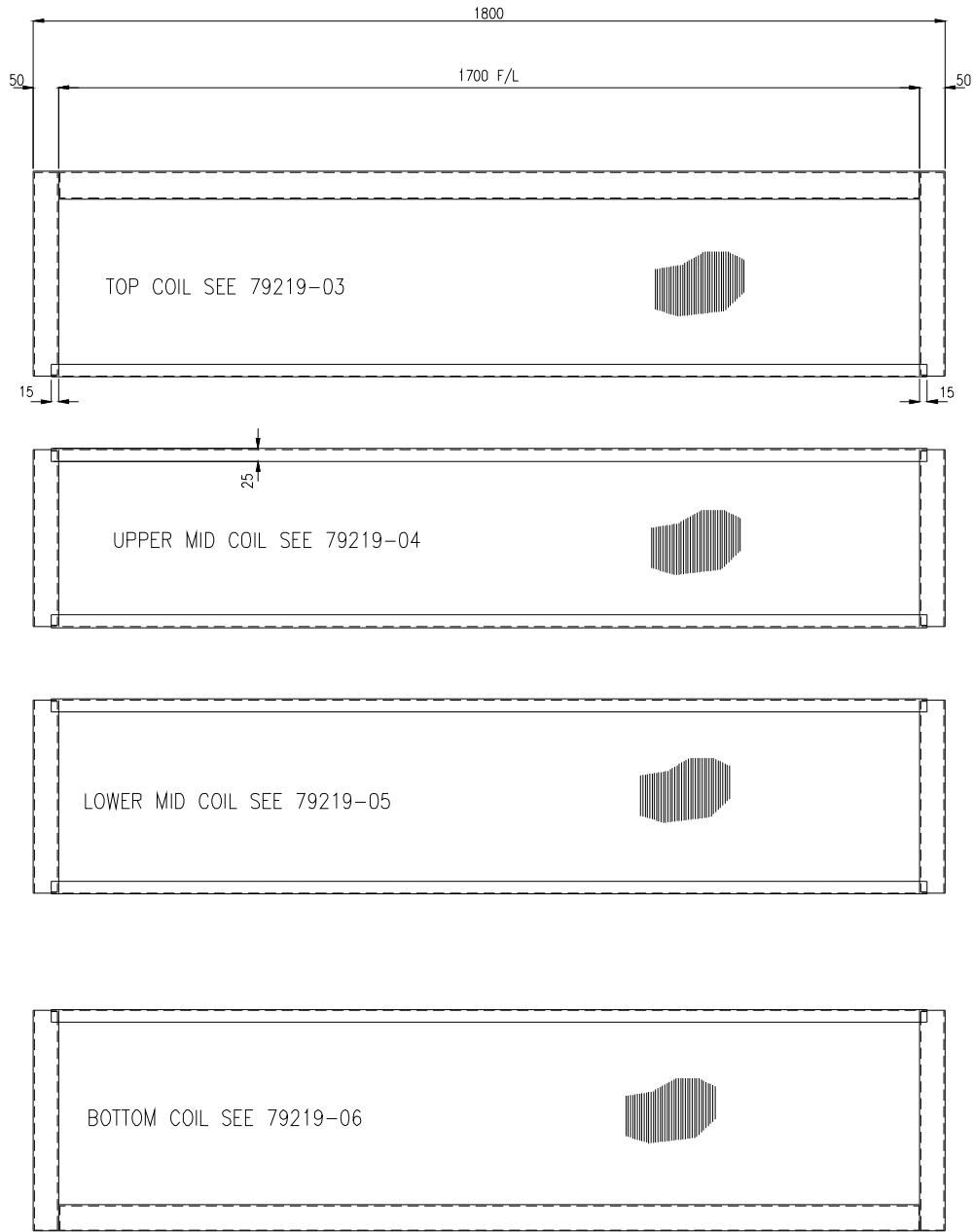
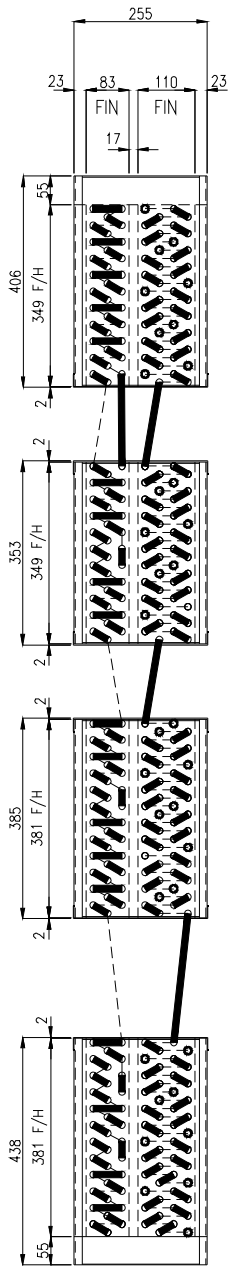
79219-01

TITLE:- REPLACEMENT C.WATER & CONDENSER COILS IN 4 SEPERATE PIECES

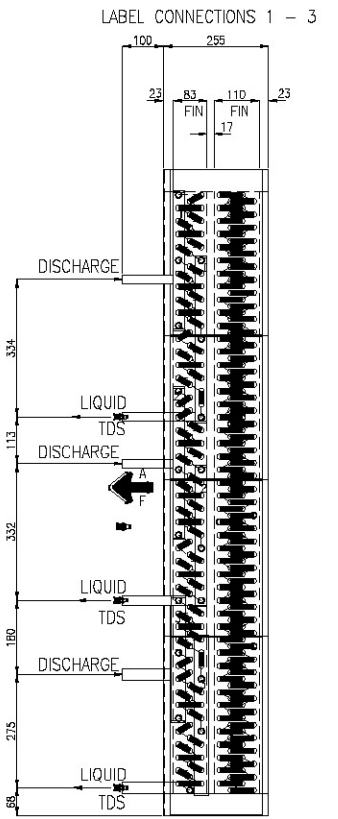


PUNCH 9.6mm HOLES ALL ROUND BOTH SIDES
FIT M6 NUTSERTS

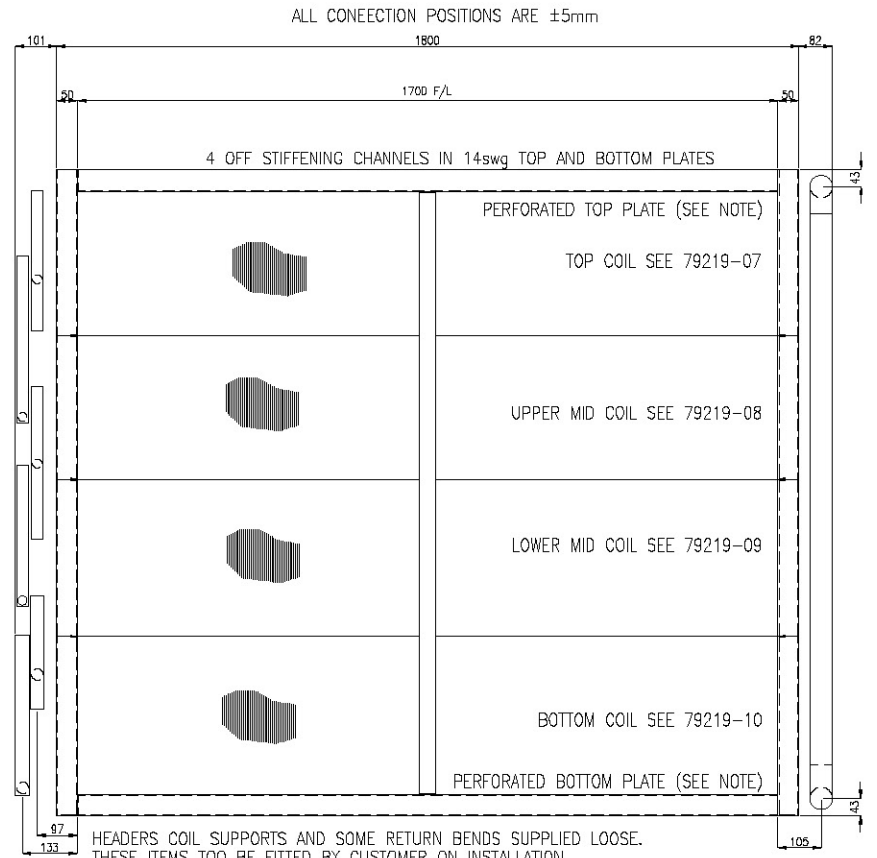
| | | | | | | | |
|--|------------------------------------|-------------|------------|---------------|----------------|---------------|---------------------|
| | TITLE 79219 FLANGE DRILLING DETAIL | CHKD MPB | ISSUE B | SHEET 40F5 | DATE 8.6.15 | DRAWN J.Y. | JOB No. 79219-01 |
|--|------------------------------------|-------------|------------|---------------|----------------|---------------|---------------------|



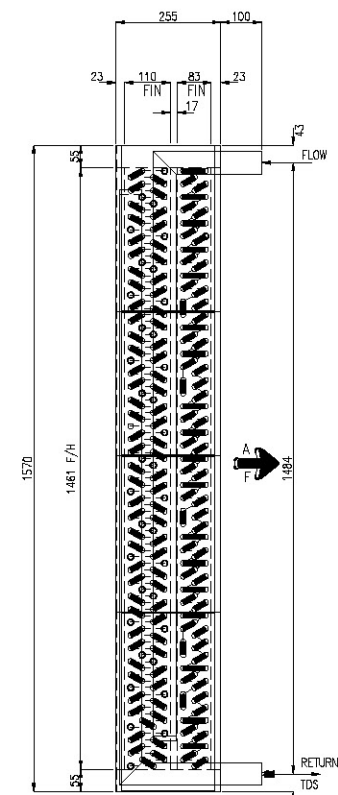
| | | | | | | | |
|--|---------------------------------------|------|-------|-------|--------|-------|----------|
| | TITLE REPLACEMENT C.WATER & CONDENSER | CHKD | ISSUE | SHEET | DATE | DRAWN | JOB No. |
| | COILS IN FOUR SEPERATE PIECES | MPB | C | 50F 5 | 9.6.15 | J.Y. | 79219-01 |



CONDENSER HEADER END AND C.WATER BENDS END
CONDENSER TEST PRESSURE 36BAR(G)
CONDENSER WORK PRESSURE 25BAR(G)



HEADERS COIL SUPPORTS AND SOME RETURN BENDS SUPPLIED LOOSE. THESE ITEMS TOO BE FITTED BY CUSTOMER ON INSTALLATION. THIS JOB IS SPLIT INTO FOUR SEPERATE COILS AND WILL BE SUPPLIED UNTESTED. EACH COIL WIL HAVE AT LEAST ONE REMOVABLE GALVANISED STEEL TRANSIT CHANNEL FITTED. GALVANISED STEEL TRANSIT CHANNELS TO BE REMOVED BY CUSTOMER ON INSTALLATION. FIT M6 NUTSERTS IN 14swg ALUMINIUM TOP & BOTTOM PLATES FOR COIL SUPPORT FIXINGS. SINGLE LINE OF PERFORATIONS BETWEEN FIN BLOCKS IN TOP AND BOTTOM PLATES. SEE SHEET 4 FOR FLANGE DRILLING DETAIL.





C.WATER HEADER END AND CONDENSER BENDS END
C.WATER TEST PRESSURE 17BAR(G)
C.WATER WORK PRESSURE 6BAR(G)

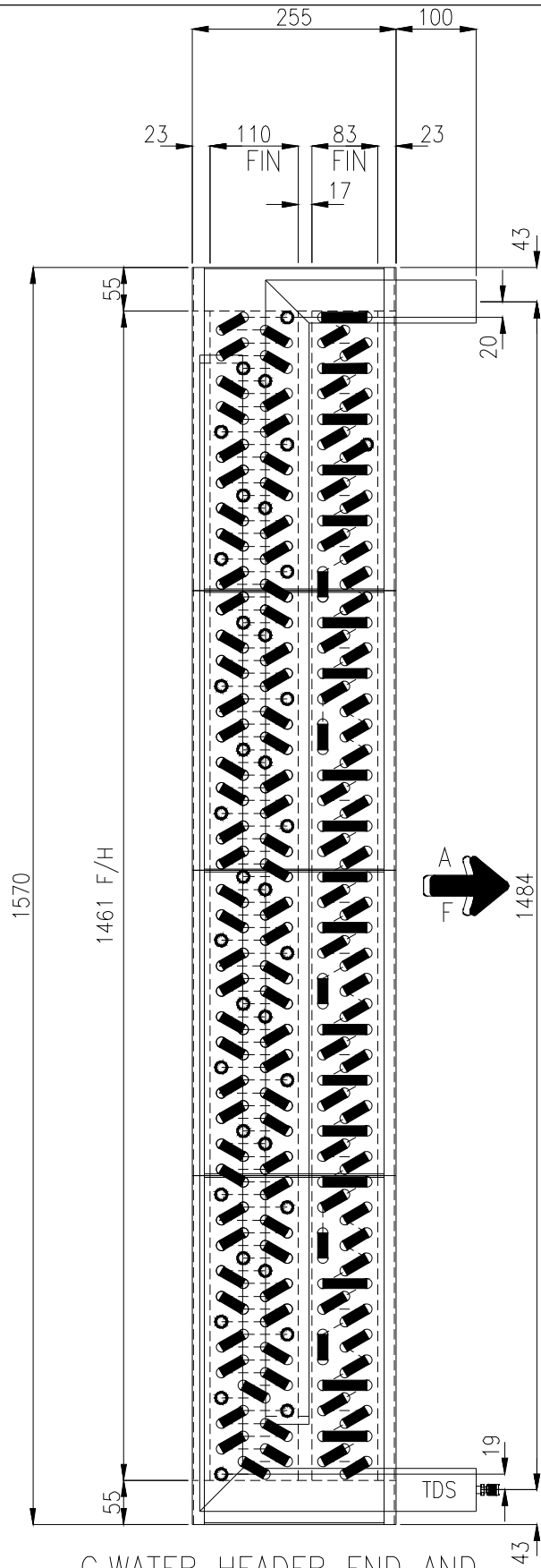
| |
|---|
| COIL CODE:HCC: 20mm TAILS CONDENSER: 46-3-12-1700(9) |
| 1/2" O.D. TUBE 0.36mm RIFLED COPPER |
| C.WATER: 46-4-12-1700(18) |
| 1/2" O.D. TUBE 0.35mm COPPER |
| FIN MATERIAL: ALUMINIUM |
| CASING MATERIAL: ALUMINIUM |
| FINISH: UNPAINTED |
| CONDENSER CONNECTIONS: SECTIONS 1 & 2: 7/8" DISCHARGE X 2 7/8" LIQUID X 2 28mm TBL Y 4mm CAPS SECTION 3: 1,1/8" DISCHARGE X 2 1,1/8" LIQUID X 2 35mm TBL X 4mm CAPS |
| C.WATER CONNECTIONS: 54mm PLAIN FLOW & RETURN 54mm TABLE X DOME CAPS |
| HANDING: L/RHS LIDAF |
| WEIGHT: 320KG |
| CUSTOMER: |

NOTES 1: HARDBOARD FIN PROTECTION & SHRINKWRAP
NOTES 2:
CIRCUIT DIA SEE
REVISION C: CIRCUITRY ALTERED 12.6.15
REVISION B: NO OFF CIRCUITS ALTERED 10.6.15

TITLE: REPLACEMENT C.WATER & CONDENSER
IN FOUR SECTIONS ASSEMBLED ON SITE
DEL DATE:
25-06-2015 PRE 10AM
No OFF: ONE
LABELS:

ORDER NO: 2078/E3204
CHKD SHT DRAWN DATE: ISSUE JOB NO:
MPB 10F5 J.Y. 8.6.15 C 79219-02



C.WATER HEADER END AND
CONDENSER BENDS END

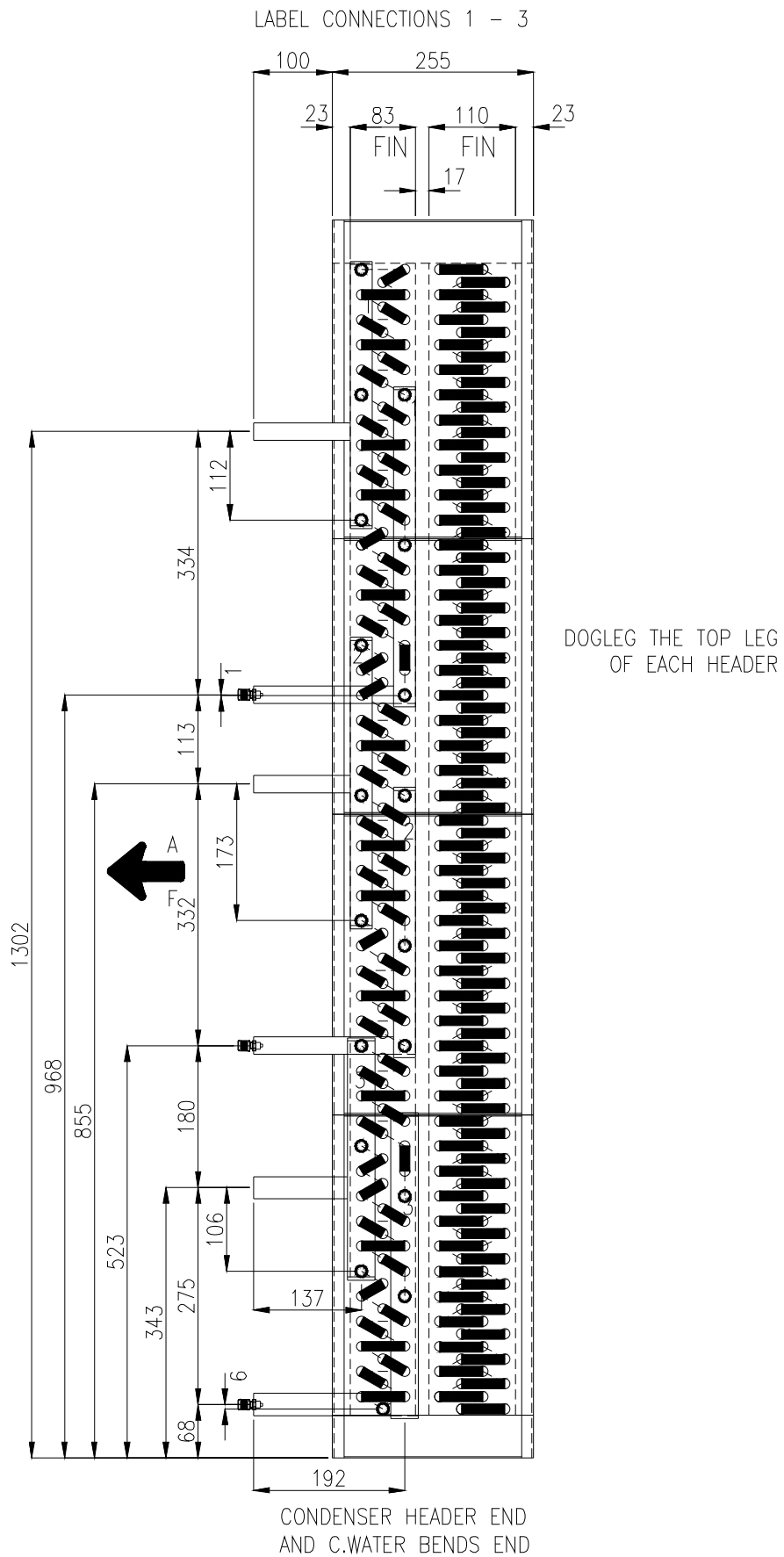
CONNECTIONS:- 54mm PLAIN FLOW & RETURN

HEADERS:- ϕ 54mm TABLE X

HEADERS:- DOME CAPS

| | | | | | | |
|---------|---------|-------|-----------|--------|-------|----------|
| NOTES:- | CHECKED | ISSUE | SHEET No. | DATE | DRAWN | JOB No. |
| | MPB | C | 20F5 | 9.6.15 | J.Y. | 79219-02 |

TITLE:- REPLACEMENT C.WATER & CONDENSER COIL IN 4 SEPERATE PIECES



CONNECTIONS 1 & 2: 22mm DISCHARGE & LIQUID X 2 CONNECTIONS 3: 28mm DISCHARGE & LIQUID X 1

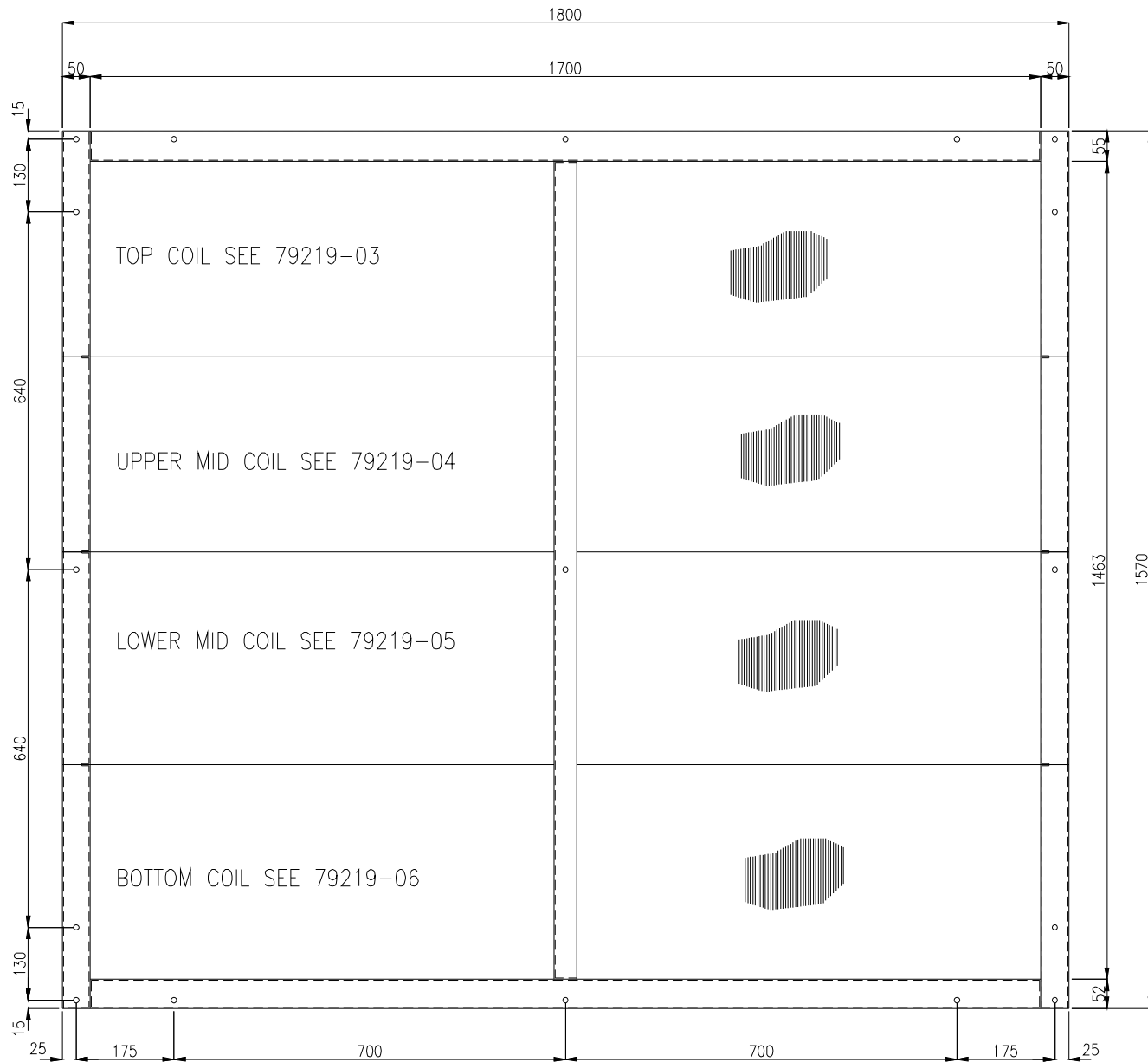
HEADERS 1 & 2: 28mm TABLE Y WITH 4mm CAPS

HEADERS 3: 35mm TABLE Y WITH 4mm CAPS

NOTES:-

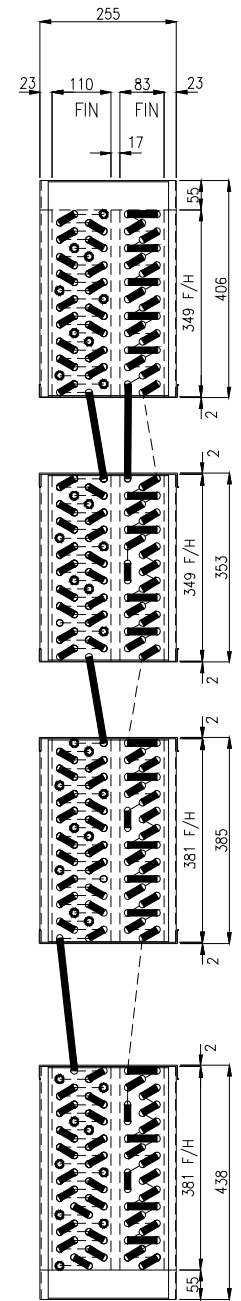
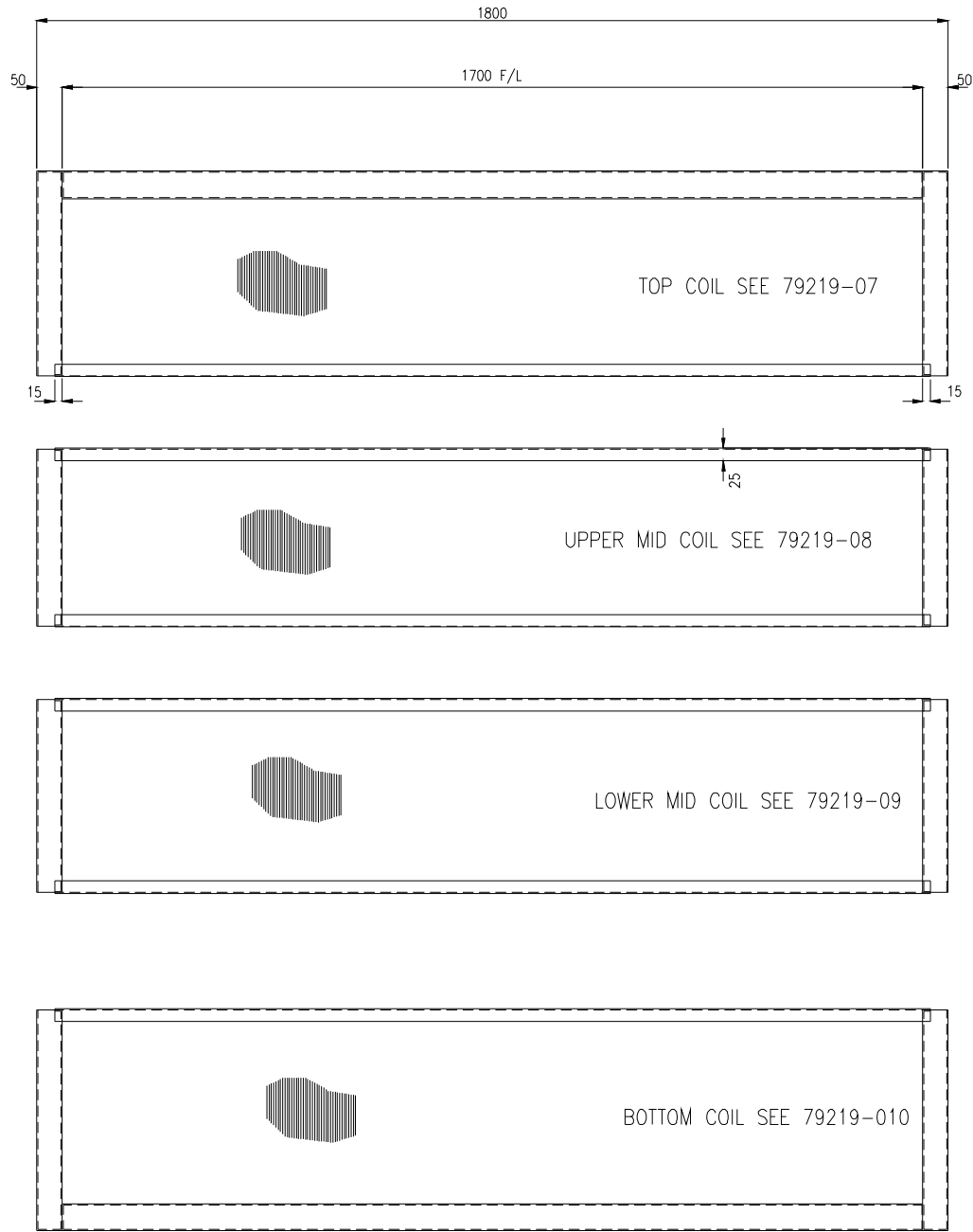
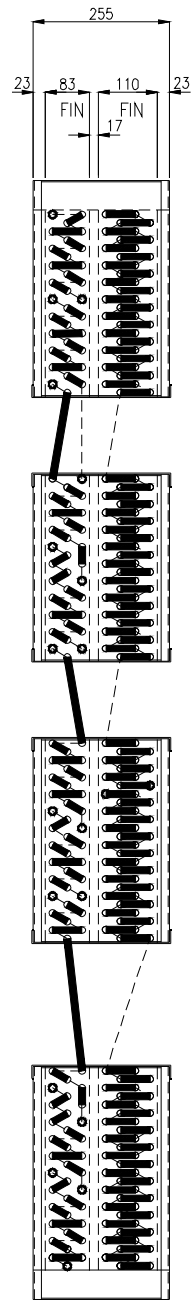
| CHECKED | ISSUE | SHEET No. | DATE | DRAWN | JOB No. |
|---------|-------|-----------|--------|-------|----------|
| MPB | C | 3 OF 5 | 9.6.15 | J.Y. | 79219-02 |

TITLE:- REPLACEMENT C.WATER & CONDENSER COILS IN 4 SEPERATE PIECES



PUNCH 9.6mm HOLES ALL ROUND BOTH SIDES
FIT M6 NUTSERTS

| | | | | | | | |
|--|------------------------------------|-------------|------------|---------------|----------------|---------------|---------------------|
| | TITLE 79219 FLANGE DRILLING DETAIL | CHKD MPB | ISSUE B | SHEET 40F5 | DATE 8.6.15 | DRAWN J.Y. | JOB No. 79219-02 |
|--|------------------------------------|-------------|------------|---------------|----------------|---------------|---------------------|



| | | | | | | | | |
|--|-------|---------------------------------|------|-------|-------|--------|-------|----------|
| | TITLE | REPLACEMENT C.WATER & CONDENSER | CHKD | ISSUE | SHEET | DATE | DRAWN | JOB No. |
| | | COILS IN FOUR SEPERATE PIECES | MPB | C | 50F 5 | 9.6.15 | J.Y. | 79219-02 |