

TIMESHEET REPORT

CUSTOMER NAME SHANKLAND HVAC LTD		SITE CONTACT (OPERATOR RESPONSIBLE FOR F-GAS COMPLIANCE) SITE ENGINEER - HEMLOW FM			SHEET NUMBER 08540
SITE NAME & ADDRESS (PLANT OWNER F-GAS) 60 GRESHAM STREET, LONDON. EC2V 7BB		ENGINEER STEVE ORLANDO	MATE CHARLIE ORLANDO		CLIENT ASSET NUMBER 01011
REASON FOR VISIT QUOTED REPAIRS	MANUFACTURER YORK	MODEL	YCIV0920PA50VABB		
JOB NUMBER J/N:2670. O/N:PO00042	SERIAL No. RBTM022090	YEAR INSTALLED	04/03/2008		
PLANT LOCATION 5TH FLOOR HVAC PLANTROOM	REFRIGERANT TYPE R134A	TOTAL REF. CHARGE	194.0 KG		
PLANT REFERENCE YORK CHILLER (01011)	REFRIGERANT GWP 1430	IND. REF SYS. CHARGE	105 + 89 KG		
LOADS SERVED BASE BUILD COMFORT COOLING LOADS	EQUIV. TONNES CO2E 277.42	FGAS LEAK CHECK FREQ.	HALF YEARLY		

WORK CARRIED OUT:

ATTENDED SITE AND CARRIED OUT THE PHYSICAL ROTATION OF THE OUTPUT INVERTER POLES BETWEEN COMPRESSOR 1 & 2 ON THE YORK INVERTER PACK.

CLEANED HEAT EXCHANGE FACES AND APPLIED YORK HEAT SINK PASTE. RE-ASSEMBLED OUTPUT POLES. TORQUED BOLTS & NUTS TO YORK TABLES.

INSTALLED OSCILLOSCOPE TO SYSTEM 2 OUTPUT POLE (WAS SYSTEM 1'S; THE GOOD INVERTER POLE). CHECKED DC LINK VOLTAGE PROFILE, RESULTS WERE AS EXPECTED AND WITHIN TOLERANCE. STARTED COMPRESSOR 2 AND SCOPED CURRENT PROFILE OF 2 PHASES, FOUND ALL WITHIN TOLERANCE.


RAN WHOLE INVERTER PACK TO 65%; 126 HZ WHERE SYSTEM 1 TRIPPED ON GATE DRIVER FAULT.

THE FAULT MOVED WITH THE MOVING OF THE INVERTER POLES. NEW IGBT PACK REQUIRED.

LEFT SYSTEM 2 RUNNING AND AVAILABLE.

ENGINEERS TIME ON SITE & TRAVEL									MATERIALS USED	
DAY	DATE	START	FINISH	TRAVEL	TOTAL	COMPLETE Y/N	MILEAGE	No. ENG	QUANTITY	DESCRIPTION
MON	02/12/2019			3	10	Y	90	1	1	YORK HEAT SINK PASTE
TUES										
WED										
THUR										
FRI										
SAT										
SUN										

CUSTOMER TO SIGN FOR ENGINEERS TIME ON SITE

ENGINEER SIGNATURE: 

CUSTOMERS SIGNATURE: _____

F-GAS QUALIFICATION: C&G 2079 PART 1

CUSTOMER NAME: SITE ENGINEER

SIGNATURE DATE: 02/12/2019

CUSTOMERS JOB TITLE: HEMLOW FM

ADDITIONAL WORKS RECOMMENDED / REQUIRED:

* SYSTEM 1 - NEW OUTPUT TRANSISTOR POLE.

ISO9001:2008. CUSTOMER SATISFACTION: 1 = UNSATISFIED 2 = BELOW AVERAGE 3 = MET EXPECTATION 4 = ABOVE AVERAGE 5 = EXCELLENT

CUSTOMER COMMENTS ABOUT PERFORMANCE ON THIS JOB / CONTRACT:

LOG - SITE DATA CAPTURE

CUSTOMER NAME SHANKLAND HVAC LTD		SITE CONTACT (OPERATOR RESPONSIBLE FOR F-GAS COMPLIANCE) SITE ENGINEER - HEMLOW FM		SHEET NUMBER 08540
SITE NAME & ADDRESS 60 GRESHAM STREET, LONDON. EC2V 7BB		ENGINEER STEVE ORLANDO	CLIENT ASSET NUMBER 01011	
REASON FOR VISIT QUOTED REPAIRS	MANUFACTURER YORK	MODEL	YCIV0920PA50VABB	
JOB NUMBER J/N:2670. O/N:PO00042	SERIAL No. RBTM022090	YEAR INSTALLED	04/03/2008	
PLANT LOCATION 5TH FLOOR HVAC PLANTROOM	REFRIGERANT TYPE R134A	QUANTITY (KG)	194.0 KG	
PLANT REFERENCE YORK CHILLER (01011)	CLG LOAD SERVED	BASE BUILD COMFORT COOLING LOADS		

CONTROLLER LOG CAPTURE - SYSTEM 2 LAST FAULT LOG

YORK INTERNATIONAL CORPORATION
LATITUDE SCREW CHILLER

HISTORY NUMBER 1
10:54:15 AM 22 OCT 2019

SYS 2 FAULT:
GATE DRIVER

STATUS AT TIME OF SHUTDOWN
SYS 1 COMPRESSOR RUNNING
SYS 2 COMPRESSOR RUNNING

ALL FAULTS
NO FAULTS

OPTIONS
CHILLED LIQUID WATER
LOCAL/REMOTE MODE REMOTE
LEAD/LAG CONTROL AUTOMATIC
LOW AMBIENT CUTOUT DISABLED

PROGRAM VALUES
SUCTION PRESS CUTOUT 1.65 BARG
LOW AMBIENT CUTOUT -17.8 DEGC
LEAVING LIQUID CUTOUT 2.2 DEGC
MOTOR CURRENT LIMIT 100 %FLA
PULLDOWN CURRENT LIMIT 50 %FLA
PULLDOWN LIMIT TIME 0 MIN
SUCTION SUPERHEAT SETP 5.5 DEGC
UNIT ID NUMBER 0

UNIT DATA
LEAVING LIQUID TEMP 7.6 DEGC
RETURN LIQUID TEMP 11.8 DEGC
COOLING RANGE 8.0 +/- 1.4 DEGC
REMOTE SETPOINT XX.X DEGC
AMBIENT AIR TEMP 19.1 DEGC
LEAD SYSTEM SYS 1
FLOW SWITCH ON
EVAPORATOR PUMP RUN ON
EVAPORATOR HEATER OFF
ACTIVE REMOTE CONTROL NONE
OPERATING HOURS 1=25968, 2=32289
START COUNTER 1=66161, 2=27809
SOFTWARE VERSION C.A09.15.03
UNIT SERIAL NUMBER RBTM 022090

VSD DATA
ACTUAL FREQUENCY 99.0 HZ
COMMAND FREQUENCY 99.0 HZ
DC BUS VOLTAGE 558 VDC
INTERNAL AMBIENT TEMP 29.5 DEGC
COOLING SYSTEM STATUS ON
BASEPLATE TEMP 50.6, 52.8 DEGC
PRECHARGE SIGNAL ON
MOTOR OVERLOADS 1/2 344 328 AMPS
VSD SOFTWARE VERSION C.VSD.09.00

SYSTEM 1 DATA

COMPRESSOR STATUS ON
RUN TIME 0- 0- 8-49 D-H-M-S
MOTOR CURRENT 201 AMPS 61 %FLA
SUCTION PRESSURE 2.61 BARG
DISCHARGE PRESSURE 8.0 BARG
OIL PRESSURE 7.2 BARG
SUCTION TEMPERATURE 10.2 DEGC
DISCHARGE TEMPERATURE 48.4 DEGC
OIL TEMPERATURE 32.8 DEGC
SAT SUCTION TEMP 6.0 DEGC
SUCTION SUPERHEAT 4.2 DEGC
SAT DISCHARGE TEMP 35.6 DEGC
DISCHARGE SUPERHEAT 12.9 DEGC
MOTOR TMP 55.8 57.9 41.4 DEGC
COMPRESSOR LOAD 49.5 %
ECONOMIZER OFF
FLASH TANK LEVEL 9.7 %
FEED VALVE % OPEN 48.8 %
DRAIN VALVE % OPEN 42.6 %
CONDENSER FANS ON 6
COMPRESSOR HEATER OFF
RUN PERMISSIVE ON
VSD RUN RELAY ON
VSD SOFTWARE RUN SIGNAL ON

SYSTEM 2 DATA

COMPRESSOR STATUS ON
RUN TIME 0- 0- 8-49 D-H-M-S
MOTOR CURRENT 189 AMPS 60 %FLA
SUCTION PRESSURE 2.70 BARG
DISCHARGE PRESSURE 7.9 BARG
OIL PRESSURE 7.3 BARG
SUCTION TEMPERATURE 9.2 DEGC
DISCHARGE TEMPERATURE 48.1 DEGC
OIL TEMPERATURE 35.0 DEGC
SAT SUCTION TEMP 6.7 DEGC
SUCTION SUPERHEAT 2.4 DEGC
SAT DISCHARGE TEMP 35.2 DEGC
DISCHARGE SUPERHEAT 12.9 DEGC
MOTOR TMP 56.2 54.6 41.4 DEGC
COMPRESSOR LOAD 49.5 %
ECONOMIZER OFF
FLASH TANK LEVEL 0.0 %
FEED VALVE % OPEN 57.9 %
DRAIN VALVE % OPEN 30.7 %
CONDENSER FANS ON 6
COMPRESSOR HEATER OFF
RUN PERMISSIVE ON
VSD RUN RELAY ON
VSD SOFTWARE RUN SIGNAL ON

LOG - SITE DATA CAPTURE

CUSTOMER NAME SHANKLAND HVAC LTD		SITE CONTACT (OPERATOR RESPONSIBLE FOR F-GAS COMPLIANCE) SITE ENGINEER - HEMLOW FM		SHEET NUMBER 08540
SITE NAME & ADDRESS 60 GRESHAM STREET, LONDON. EC2V 7BB		ENGINEER STEVE ORLANDO	CLIENT ASSET NUMBER 01011	
REASON FOR VISIT QUOTED REPAIRS	MANUFACTURER YORK	MODEL	YCIV0920PA50VABB	
JOB NUMBER J/N:2670. O/N:PO00042	SERIAL No. RBTM022090	YEAR INSTALLED	04/03/2008	
PLANT LOCATION 5TH FLOOR HVAC PLANTROOM	REFRIGERANT TYPE R134A	QUANTITY (KG)	194.0 KG	
PLANT REFERENCE YORK CHILLER (01011)	CLG LOAD SERVED	BASE BUILD COMFORT COOLING LOADS		

CONTROLLER LOG CAPTURE - FAULT MOVED TO SYSTEM 1

YORK INTERNATIONAL CORPORATION
LATITUDE SCREW CHILLER

HISTORY NUMBER 1
12:35:40 PM 02 DEC 2019

SYS 1 FAULT:
GATE DRIVER

STATUS AT TIME OF SHUTDOWN
SYS 1 COMPRESSOR RUNNING
SYS 2 COMPRESSOR RUNNING

ALL FAULTS
UNIT FAULT:
MOTOR CURRENT OVERLOAD

OPTIONS
CHILLED LIQUID WATER
LOCAL/REMOTE MODE REMOTE
LEAD/LAG CONTROL AUTOMATIC
LOW AMBIENT CUTOUT DISABLED

PROGRAM VALUES
SUCTION PRESS CUTOUT 1.65 BARG
LOW AMBIENT CUTOUT -17.8 DEGC
LEAVING LIQUID CUTOUT 2.2 DEGC
MOTOR CURRENT LIMIT 100 %FLA
PULLDOWN CURRENT LIMIT 50 %FLA
PULLDOWN LIMIT TIME 0 MIN
SUCTION SUPERHEAT SETP 5.5 DEGC
UNIT ID NUMBER 0

UNIT DATA
LEAVING LIQUID TEMP 6.9 DEGC
RETURN LIQUID TEMP 12.1 DEGC
COOLING RANGE 4.5 +/- 1.4 DEGC
REMOTE SETPOINT XX.X DEGC
AMBIENT AIR TEMP 12.3 DEGC
LEAD SYSTEM SYS 1
FLOW SWITCH ON
EVAPORATOR PUMP RUN ON
EVAPORATOR HEATER OFF
ACTIVE REMOTE CONTROL NONE
OPERATING HOURS 1=26511, 2=32290
START COUNTER 1=67550, 2=27816
SOFTWARE VERSION C.A09.15.03
UNIT SERIAL NUMBER RBTM 022090

VSD DATA
ACTUAL FREQUENCY 126.6 HZ
COMMAND FREQUENCY 127.0 HZ
DC BUS VOLTAGE 557 VDC
INTERNAL AMBIENT TEMP 24.4 DEGC
COOLING SYSTEM STATUS ON
BASEPLATE TEMP 67.2, 51.7 DEGC
PRECHARGE SIGNAL ON
MOTOR OVERLOADS 1/2 344 328 AMPS
VSD SOFTWARE VERSION C.VSD.09.00

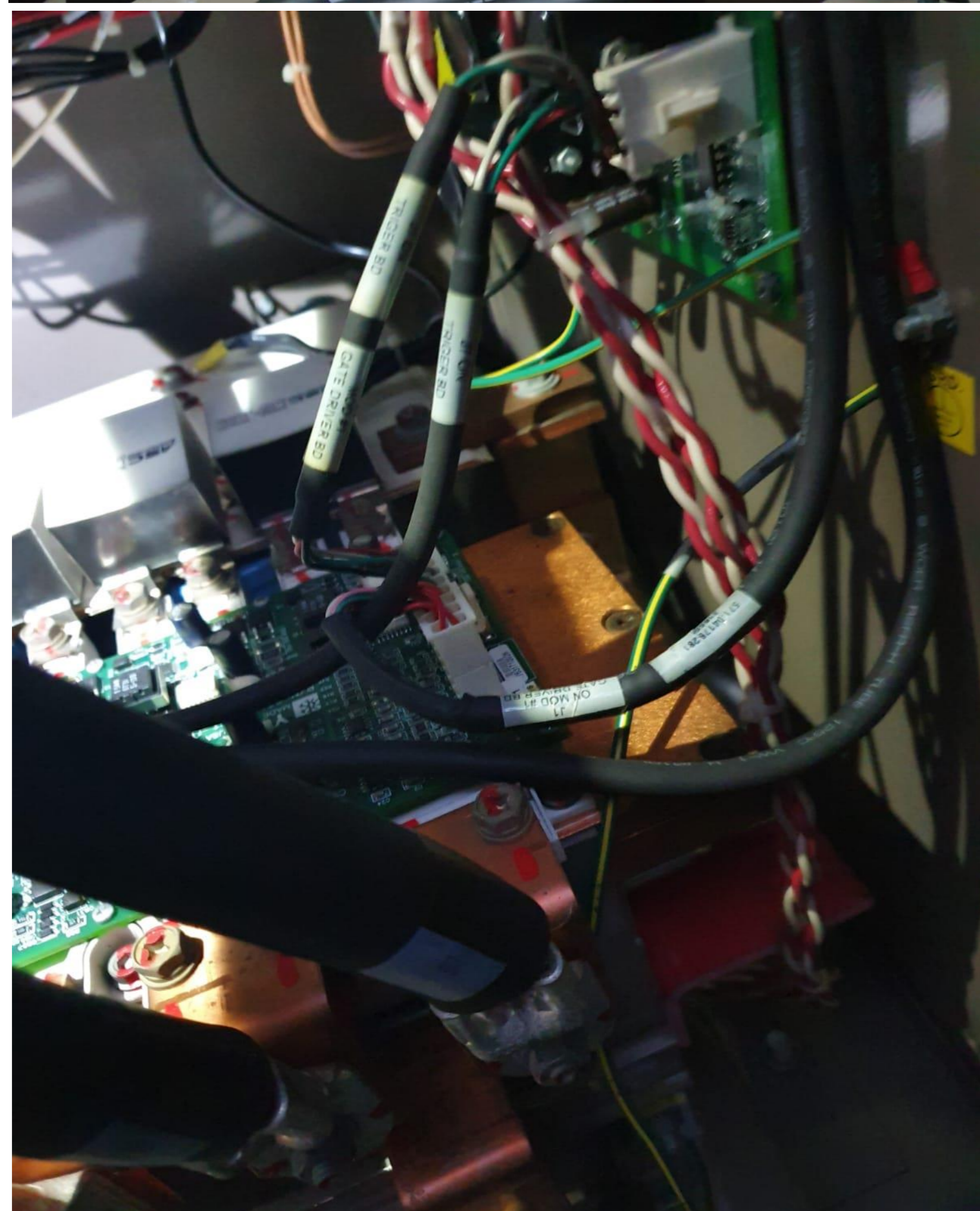
SYSTEM 1 DATA
COMPRESSOR STATUS ON
RUN TIME 0-0-6-2 D-H-M-S
MOTOR CURRENT 222 AMPS 67 %FLA
SUCTION PRESSURE 2.32 BARG
DISCHARGE PRESSURE 9.7 BARG
OIL PRESSURE 8.9 BARG
SUCTION TEMPERATURE 11.6 DEGC
DISCHARGE TEMPERATURE 51.3 DEGC
OIL TEMPERATURE 37.5 DEGC
SAT SUCTION TEMP 3.6 DEGC
SUCTION SUPERHEAT 8.0 DEGC
SAT DISCHARGE TEMP 42.2 DEGC
DISCHARGE SUPERHEAT 9.1 DEGC
MOTOR TMP 57.4 59.2 42.1 DEGC
COMPRESSOR LOAD 63.3 %
ECONOMIZER ON
FLASH TANK LEVEL 8.4 %
FEED VALVE % OPEN 45.2 %
DRAIN VALVE % OPEN 55.0 %
CONDENSER FANS ON 4
COMPRESSOR HEATER OFF
RUN PERMISSIVE ON
VSD RUN RELAY ON
VSD SOFTWARE RUN SIGNAL ON

SYSTEM 2 DATA
COMPRESSOR STATUS ON
RUN TIME 0-0-6-2 D-H-M-S
MOTOR CURRENT 210 AMPS 67 %FLA
SUCTION PRESSURE 2.37 BARG
DISCHARGE PRESSURE 9.7 BARG
OIL PRESSURE 9.1 BARG
SUCTION TEMPERATURE 11.4 DEGC
DISCHARGE TEMPERATURE 50.3 DEGC
OIL TEMPERATURE 38.6 DEGC
SAT SUCTION TEMP 4.1 DEGC
SUCTION SUPERHEAT 7.4 DEGC
SAT DISCHARGE TEMP 42.1 DEGC
DISCHARGE SUPERHEAT 8.2 DEGC
MOTOR TMP 55.2 52.7 40.6 DEGC
COMPRESSOR LOAD 63.3 %
ECONOMIZER ON
FLASH TANK LEVEL 0.0 %
FEED VALVE % OPEN 53.0 %
DRAIN VALVE % OPEN 48.0 %
CONDENSER FANS ON 4
COMPRESSOR HEATER OFF
RUN PERMISSIVE ON
VSD RUN RELAY ON
VSD SOFTWARE RUN SIGNAL ON

LOG - SITE PICTURES

CUSTOMER NAME		SITE CONTACT (OPERATOR RESPONSIBLE FOR F-GAS COMPLIANCE)		SHEET NUMBER	
SHANKLAND HVAC LTD		SITE ENGINEER - HEMLOW FM		08540	
SITE NAME & ADDRESS		ENGINEER	STEVE ORLANDO	CLIENT ASSET NUMBER	
60 GRESHAM STREET, LONDON. EC2V 7BB		F-GAS QUALIFICATION	C&G 2079 PART 1	01011	
REASON FOR VISIT	QUOTED REPAIRS	MANUFACTURER	YORK	MODEL	YCIV0920PA50VABB
JOB NUMBER	J/N:2670. O/N:PO00042	SERIAL No.	RBTM022090	YEAR INSTALLED	04/03/2008
PLANT LOCATION	5TH FLOOR HVAC PLANTROOM	REFRIGERANT TYPE	R134A	QUANTITY (KG)	194.0 KG
PLANT REFERENCE	YORK CHILLER (01011)	CLG LOAD SERVED	BASE BUILD COMFORT COOLING LOADS		

SITE PICTURE LOG



LOG - SITE PICTURES

CUSTOMER NAME SHANKLAND HVAC LTD		SITE CONTACT (OPERATOR RESPONSIBLE FOR F-GAS COMPLIANCE) SITE ENGINEER - HEMLOW FM		SHEET NUMBER 08540
SITE NAME & ADDRESS 60 GRESHAM STREET, LONDON. EC2V 7BB		ENGINEER STEVE ORLANDO	CLIENT ASSET NUMBER 01011	
REASON FOR VISIT QUOTED REPAIRS	MANUFACTURER YORK	MODEL YCIV0920PA50VABB		
JOB NUMBER J/N:2670. O/N:PO00042	SERIAL No. RBTM022090	YEAR INSTALLED 04/03/2008		
PLANT LOCATION 5TH FLOOR HVAC PLANTROOM	REFRIGERANT TYPE R134A	QUANTITY (KG) 194.0 KG		
PLANT REFERENCE YORK CHILLER (01011)	CLG LOAD SERVED BASE BUILD COMFORT COOLING LOADS			

OSCILLOSCOPE LOG OF DC LINK AND TRANSISTOR PACK OUTPUT CURRENT - COMP 1

